



GAIL FARBER, Director

# COUNTY OF LOS ANGELES

## DEPARTMENT OF PUBLIC WORKS

*"To Enrich Lives Through Effective and Caring Service"*

900 SOUTH FREMONT AVENUE  
ALHAMBRA, CALIFORNIA 91803-1331  
Telephone: (626) 458-5100  
<http://dpw.lacounty.gov>

ADDRESS ALL CORRESPONDENCE TO:  
P.O. BOX 1460  
ALHAMBRA, CALIFORNIA 91802-1460

February 2, 2009

IN REPLY PLEASE

REFER TO FILE: **SM-1**

Mr. Elroy Kiepke, City Manager  
City of Bradbury  
600 Winston Avenue  
Bradbury, CA 91010-1199

Attention Ms. Claudia Saldana

Dear Mr. Kiepke:

### **CONSOLIDATED SEWER MAINTENANCE DISTRICT CONDITION ASSESSMENT PROGRAM REPORT PROJECT Y0TV0506D**

This letter is to inform you that as part of the Sewer Condition Assessment Program, the County of Los Angeles Department of Public Works Consolidated Sewer Maintenance District has completed the closed-circuit television (CCTV) inspection of 4,843 feet or approximately 45 percent of the City of Bradbury's sewer system.

The enclosed report outlines the structural and maintenance ratings of your system based on the Pipeline Assessment and Certification Program's rating methodology. Included in the report are the following:

- Condition Assessment Report
- Project Overview Map (Enclosure 1)
- Quick Maintenance Rating Report Priority List and Quick Maintenance Rating Map (Enclosure 2)
- Quick Structural Rating Report Priority List and Quick Structural Rating Map (Enclosure 3)
- Infrastructure Inspection Reports for Grades 4 and 5 (Enclosure 4)
- CCTV Sewer Inspection Project Schedule (Enclosure 5)

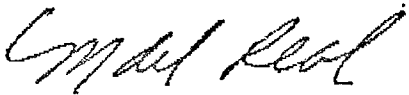
Mr Elroy Kiepke  
February 2, 2009  
Page 2

The Condition Assessment Report will provide you with details regarding the maintenance and structural condition of your City's sewer mainlines. This information can be included in your agency's Sewer System Management Plan as a reference in Chapter 8.0, System Evaluation and Capacity Assurance Plan. The segments with critical maintenance issues have been cleaned and, in some instances, have been incorporated into our routine cleaning schedule for continued monitoring. In addition, the segments with severe structural defects have either been repaired or will be scheduled for repair as part of the ongoing Accumulative Capital Outlay Project.

If you have any questions regarding this report or the Condition Assessment Program, please contact Mr Robert Swartz at (626) 300-3367, Monday through Friday, 8 a.m. to 4 p.m., or at [rswartz@dpw.lacounty.gov](mailto:rswartz@dpw.lacounty.gov).

Very truly yours,

GAIL FARBER  
Director of Public Works



MANUEL DEL REAL  
Assistant Deputy Director  
Sewer Maintenance Division

FV:kk  
1619

Enc.

bc: Programs Development (Ariki)

bc: MdR, KL, FV, [File \(Project Y0TV0506D\)](#), SPINDLE

**CONDITION ASSESSMENT REPORT  
COUNTY OF LOS ANGELES DEPARTMENT OF PUBLIC WORKS  
CONSOLIDATED SEWER MAINTENANCE DISTRICT**

PROJECT NAME:	Y0TV0506D	PROJECT MGR:	Kari Eskridge
PROJECT DATE	4/17/06-8/14/06	CONTACT NO:	(626) 300-3390
SUP. DISTRICT(s):	5	MAP PAGE(S):	2212, 2166, and 2428
Report By	Colin McCarter	Report Date.	01/13/09

**INTRODUCTION**

As part of the Sewer Condition Assessment Program, the County of Los Angeles Department of Public Works Consolidated Sewer Maintenance District has completed the closed-circuit television (CCTV) inspection of 4,843 feet or 45 percent of the City of Bradbury’s sewer system.

The Sewer Condition Assessment Program utilizes the Pipeline Assessment and Certification Program (PACP) Quick Rating methodology to rank the structural and maintenance condition of your system based on industry standards.

**PROJECT AREA AND DESCRIPTION**

Project Y0TV0506D included sewer lines located in both the Unincorporated County of Los Angeles area and in the Cities of Glendora, Bradbury, Duarte, La Cañada Flintridge, and San Dimas. Enclosed for your reference is an overview map of the project area within your City (Enclosure 1).

**DEFECT GRADE DESCRIPTION**

The Quick Rating indicates the number of occurrences for the highest severity grade for each pipe segment for either maintenance or structural defects. A grade of 1 indicates that a pipe segment is in excellent condition with minor defects, while a grade of 5 indicates that a pipe segment may require immediate attention. A detailed breakdown of the five possible defect grades is as follows.

<b>Grade</b>	<b>Description</b>	<b>Estimate time to Failure</b>
<b>1:</b>	<b>EXCELLENT: Minor Defects.</b>	Unlikely in the foreseeable future
<b>2:</b>	<b>GOOD: Defects that have not begun to deteriorate.</b>	20 years or more
<b>3:</b>	<b>FAIR: Moderate defects that will continue to deteriorate.</b>	10 to 20 years
<b>4:</b>	<b>POOR: Severe defects that will become grade 5 defects within the foreseeable future.</b>	5 to 10 years
<b>5:</b>	<b>IMMEDIATE ATTENTION: Defects requiring immediate attention.</b>	Has failed or will likely fail within the next 5 years

## MAINTENANCE REPORT

Our inspection revealed that approximately 83.6 percent of the system televised was free of blockages or restrictions that would impede sewer flows. However, the remaining 16.4 percent of the inspected pipe segments within the City of Bradbury area had a PACP maintenance grade of 4 as indicated in the Quick Maintenance Rating Table shown below. These segments have been incorporated into our routine cleaning schedule with corrective action taken as noted on the Quick Maintenance Rating Report Priority List (Enclosure 2). Also included is a color-coded map showing the quick maintenance rating for each pipe segment.

### QUICK MAINTENANCE RATING TABLE

DEFECT GRADE	PIPE LENGTH (FT)	PERCENT TOTAL INSPECTED PIPE LENGTH	NO. SEGMENTS
1: Excellent	252	5.2	2
2: Good	3,587	74.1	11
3: Fair	209	4.3	1
4: Poor	795	16.4	3
5: Immediate Attention	0	0	0
TOTAL	4,843	100.0	17

## STRUCTURAL REPORT

Our inspection revealed that approximately 92.8 percent of the inspected pipe segments within the City of Bradbury were free of severe structural defects. However, the remaining 7.2 percent of the inspected pipe segments had a PACP structural grade of 4 as indicated in the Quick Structural Rating Table shown below. These segments have been placed on a priority list based on the severity and the need for action. Item 1 in the Quick Structural Rating Report Priority List (Enclosure 3) includes defects that do not impact the structural integrity of the pipe. At this time, no action is recommended. A color-coded map showing the Quick Structural Rating for each pipe segment is located in Enclosure 3. A copy of the actual inspection reports for this segment is included in Enclosure 4.

### QUICK STRUCTURAL RATING TABLE

DEFECT GRADE	PIPE LENGTH (FT)	PERCENT TOTAL INSPECTED PIPE LENGTH	NO. SEGMENTS
1: Excellent	3,183	65.7	11
2: Good	1,156	23.9	4
3: Fair	154	3.2	1
4: Poor	350	7.2	1
5: Immediate Attention	0	0	0
TOTAL	4,843	100.0	17

## **FUTURE PROJECTS**

The Sewer Condition Assessment Program will be performing future CCTV inspections of the remaining sewer lines within the City of Bradbury. For your reference, the CCTV Sewer Inspection project schedule for the City of Bradbury is listed in Enclosure 5

ENCLOSURE 1:

Project Overview Map

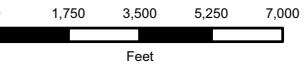
# ENCLOSURE 1

## CCTV PROJECT

### YOTV0506D

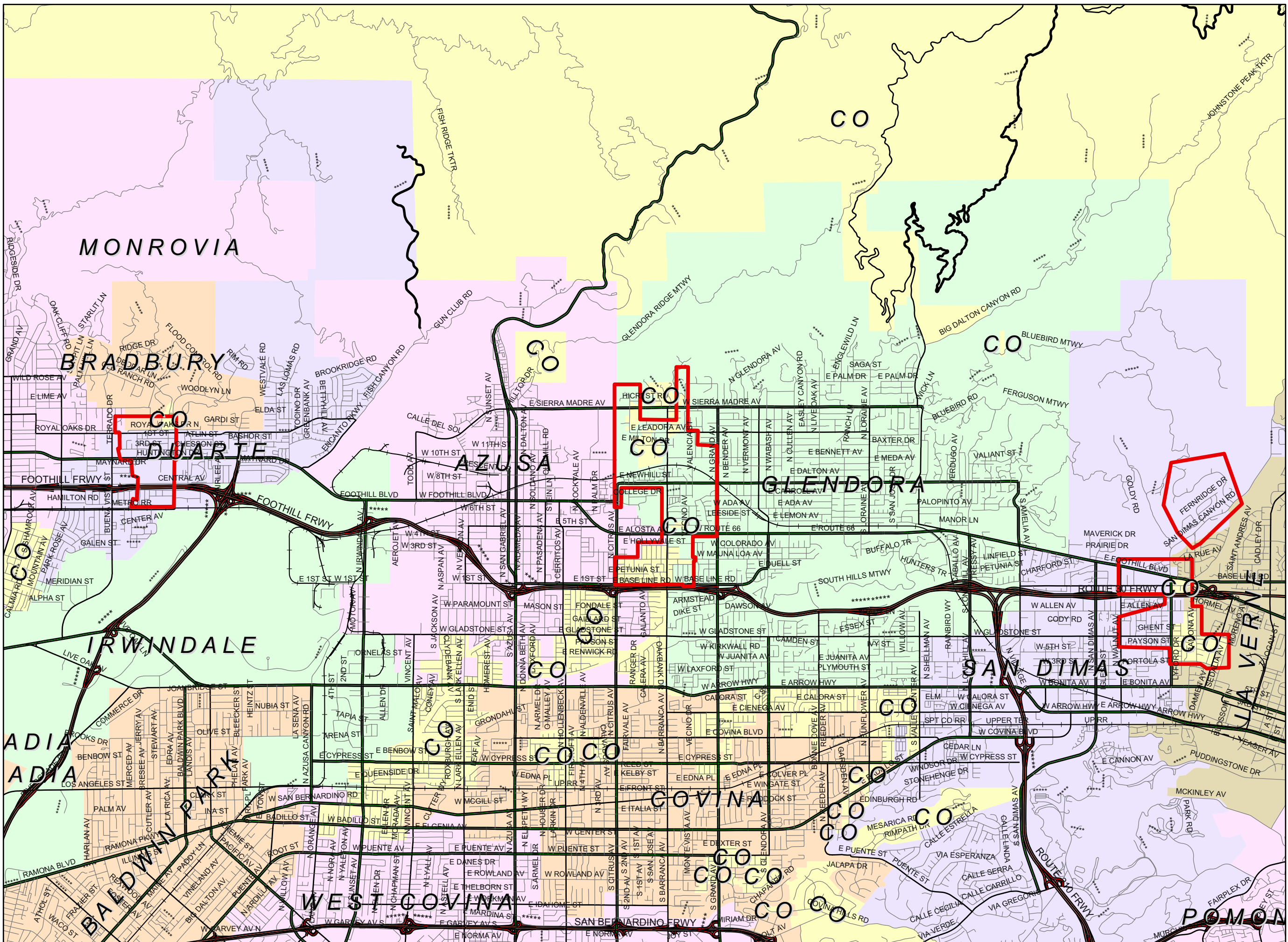
Supervisorial District 5  
 Bradbury, Duarte, Glendora, La Canada Flintridge, San Dimas, Unincorporated County

### PROJECT OVERVIEW



### Legend

- <all other values>
- SMD Manholes**
  - Other
- MH Type**
  - Standard
  - ▲ DROP
  - Shallow
  - ◆ Trap
  - ⊗ Siphon
  - P SMD Pump Satations
  - WTP SMD Treatment Plants
- Maintained by Others:**
  - Trunk Sewerlines
  - - - Non SMD Sanitary Sewers
  - Trunk Mh
  - DPW\_SMD.nosmd\_mh
  - Parcel Boundary
  - SMD Operations Maps
  - Y0TV0506D



This map is intended only for internal operations of the Los Angeles County Sewer Maintenance Districts. Los Angeles County expressly disclaims any liability for any inaccuracies which may be present in this map. Data contained in this map is produced in whole or part from the Thomas Bros. Maps® digital database. This map is copyrighted, and reproduced with permission granted, by Thomas Bros. Maps®. All rights reserved.

December 11, 2008

## ENCLOSURE 2:

- Quick Maintenance Rating Report  
Priority List
- Quick Maintenance Rating Map



ENCLOSURE 2  
QUICK MAINTENANCE RATING REPORT PRIORITY LIST  
CITY OF BRADBURY (Y0TV0506D)  
as of 8/14/06

<b>Item No.</b>	<b>QMR</b>	<b>Start MH</b>	<b>End MH</b>	<b>Street</b>	<b>Observation</b>	<b>Corrective Action Taken</b>
1	4121	2212-0047	2212-0046	BRAEWOOD DR	Roots	Rodder (Last Serviced: 7/29/08)
2	4131	2166-0178	2166-0177	WINSTON AV	Root ball	Rodder (Last Serviced: 7/25/08)
3	4121	2166-0174	2166-0312	ROYAL OAKS DR	Root ball	Rodder (Last Serviced: 7/25/08)

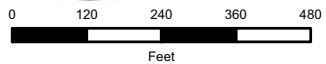
# ENCLOSURE 2

## CCTV PROJECT

### YOTVO506D

Supervisorial District 5  
 Bradbury, Duarte, Glendora,  
 La Canada Flintridge,  
 San Dimas, Unincorporated  
 County

#### QUICK MAINTENANCE RATING (QMR)



#### Legend

##### SMD Sanitary Sewers

- <all other values>
- 1- EXCELLENT
- 2- GOOD
- 3- FAIR
- 4- POOR

##### SMD Manholes

- Other

##### MH Type

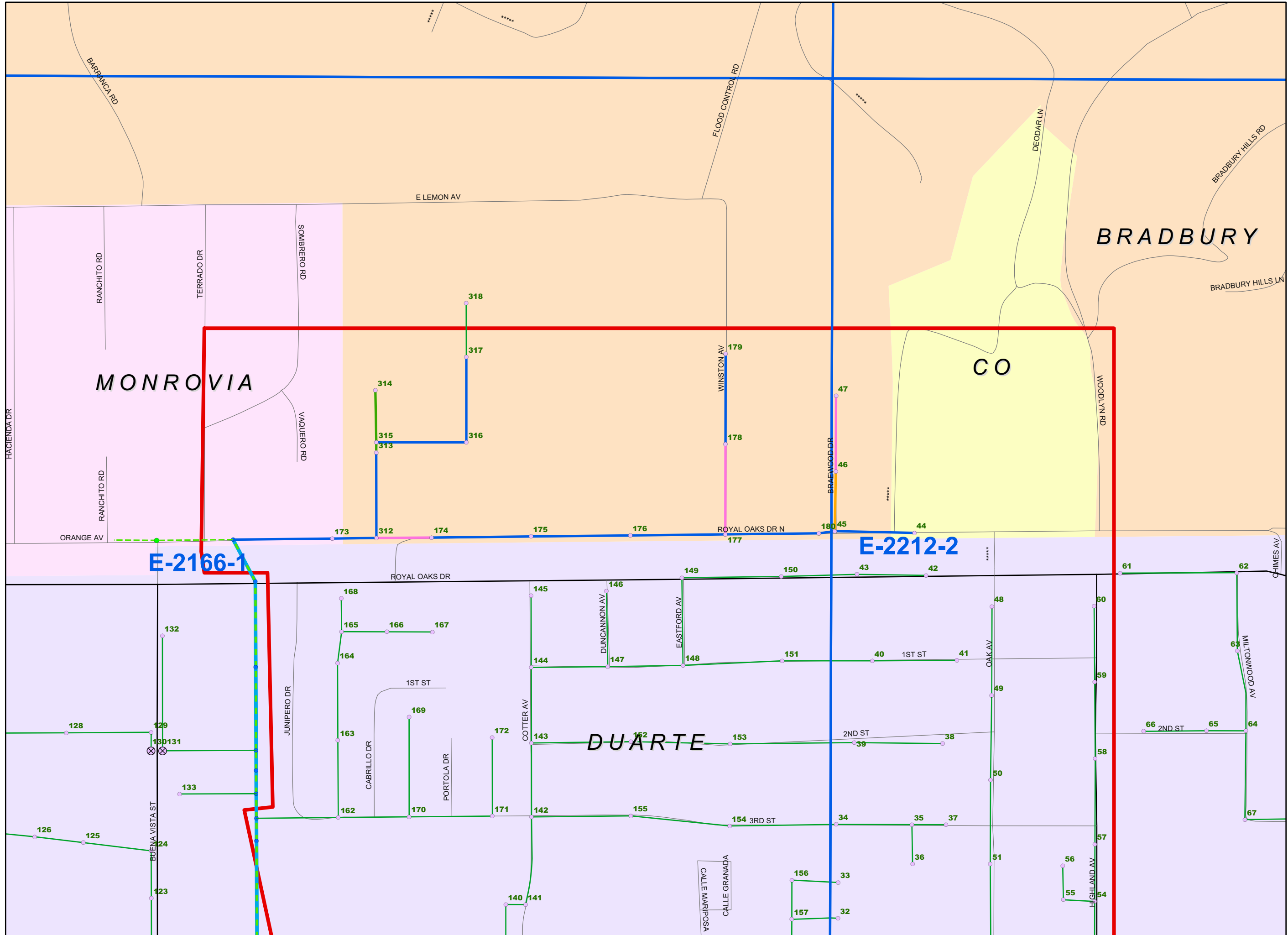
- Standard
- DROP
- Shallow
- Trap
- Siphon
- SMD Pump Satations
- SMD Treatment Plants

##### Maintained by Others:

- Trunk Sewerlines
- Non SMD Sanitary Sewers
- Trunk Mh
- DPW\_SMD.nosmd\_mh
- Parcel Boundary
- SMD Operations Maps
- YOTVO506D

This map is intended only for internal operations of the Los Angeles County Sewer Maintenance Districts. Los Angeles County expressly disclaims any liability for any inaccuracies which may be present in this map. Data contained in this map is produced in whole or part from the Thomas Bros. Maps® digital database. This map is copyrighted, and reproduced with permission granted, by Thomas Bros. Maps®. All rights reserved.

December 11, 2008



## ENCLOSURE 3:

- Quick Structural Rating Report  
Priority List
- Quick Structural Rating Map

ENCLOSURE 3  
QUICK STRUCTURAL RATING REPORT PRIORITY LIST  
CITY OF BRADBURY (Y0TV0506D)  
as of 8/14/06

<b>Item No.</b>	<b>QSR</b>	<b>Start MH</b>	<b>End MH</b>	<b>Street</b>	<b>Observation: Location</b>	<b>Proposed Corrective Method</b>
1	4221	2166-0176	2166-0175	ROYAL OAKS DR	Fractures: 201' and 241'	Structural integrity in tact. No action needed.

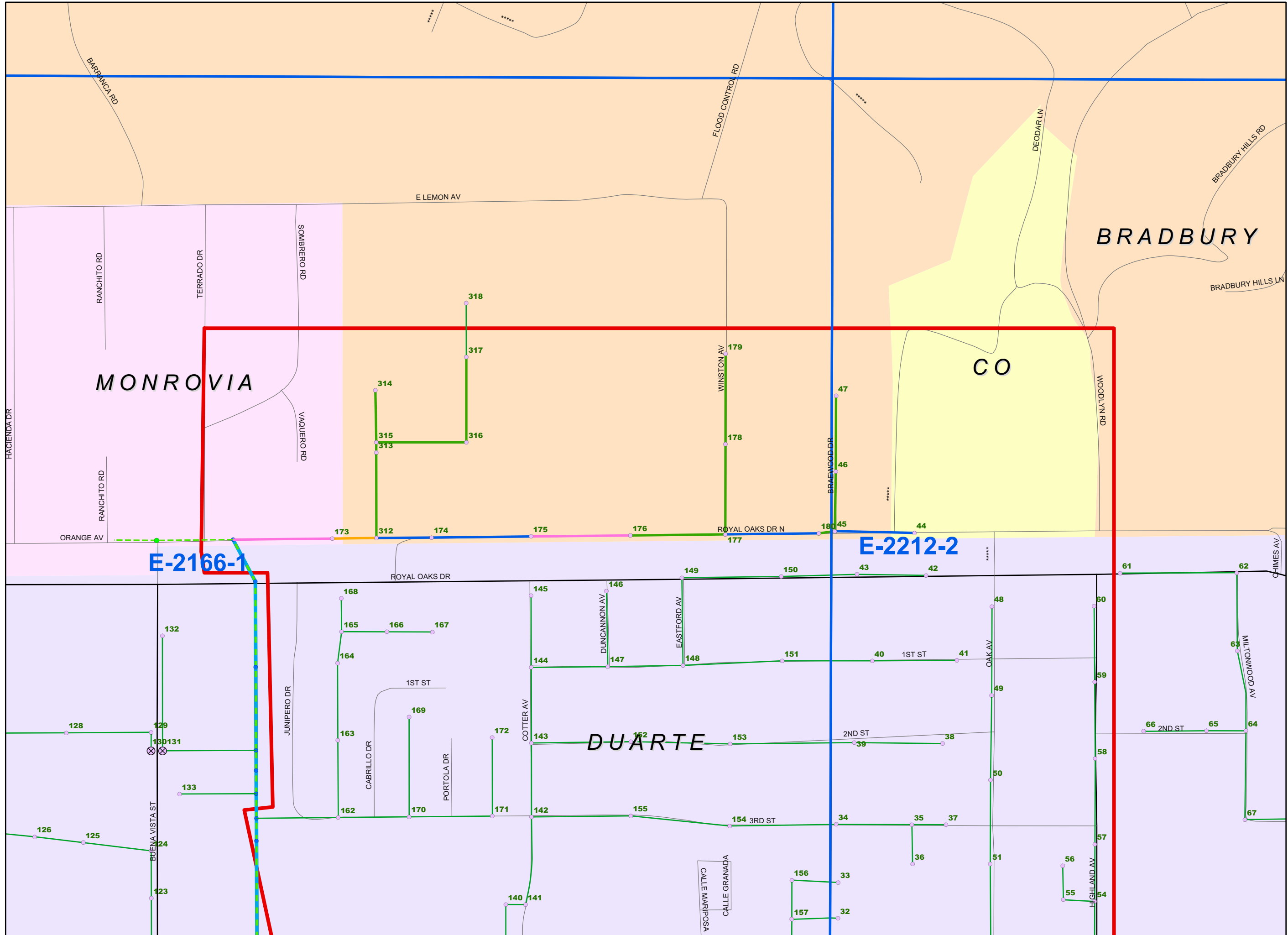
# ENCLOSURE 3

## CCTV PROJECT

### YOTV0506D

Supervisorial District 5  
Bradbury, Duarte, Glendora,  
La Canada Flintridge,  
San Dimas, Unincorporated  
County

### QUICK STRUCTURAL RATING (QSR)



### Legend

#### SMD Sanitary Sewers

- <all other values>
- 1: EXCELLENT
- 2: GOOD
- 3: FAIR
- 4: POOR

#### SMD Manholes

- Other
- Standard
- DROP
- Shallow
- Trap
- Siphon
- SMD Pump Satations

- SMD Treatment Plants

#### Maintained by Others:

- Trunk Sewerlines
- Non SMD Sanitary Sewers
- Trunk Mh
- DPW\_SMD.nosmd\_mh
- Parcel Boundary
- SMD Operations Maps
- YOTV0506D

This map is intended only for internal operations of the Los Angeles County Sewer Maintenance Districts. Los Angeles County expressly disclaims any liability for any inaccuracies which may be present in this map. Data contained in this map is produced in whole or part from the Thomas Bros. Maps® digital database. This map is copyrighted, and reproduced with permission granted, by Thomas Bros. Maps®. All rights reserved.

December 11, 2008

## ENCLOSURE 4:

Infrastructure Inspection Reports  
for Grades 4 and 5



National Plant Services, INC.  
 1461 Harbor Avenue  
 Long Beach, CA 90813-2741  
 Tel: (800) 445-3614, Fax: (562) 495-1528

## Inspection report

Date: <b>20060814</b>	P.O.#: <b>Y0TV0506D</b>	Weather: <b>1 Dry</b>	Surveyed By: <b>NPS T Glock</b>	section number: <b>426</b>	PSR: <b>112649</b>
Total Pipe Length: <b>350</b>	Survey Customer: <b>LACDPW</b>	System Owner: <b>BRD</b>	Clean Date:	Pre-Cleaned: <b>J Jetting</b>	Map Grid #: <b>2166</b>

Street: <b>ROYAL OAKS DR</b>	Flow Control: <b>N Not Controlled</b>	Start MH: <b>2166-0176</b>
City: <b>BRD</b>	Year Renewed:	End MH: <b>2166-0175</b>
Location Code: <b>C Light Highway</b>	Tape/Media #: <b>002</b>	pipe length: <b>348.31 ft</b>

Reason for inspection: <b>F Routine Assessment</b>	Dia/Height: <b>C Circular 8/8</b>
Use of Sewer: <b>SS Sanitary</b>	Material: <b>VCP Vitrified Clay Pipe</b> Pipe Length: <b>5.0</b>
Drain. Area:	Lining Method:
	Category:

Remark.. **Fractures ,roots**

1:850	position	observation	MPEG	photo	grade
	0.00	Manhole, Remark: Start of Segment	00:01:35		
	2.10	Water Level, 20 % of cross sectional area	00:01:58		M 2
	2.10	Water Mark, 30 % of cross sectional area	00:02:00		M 2
	49.40	Tap Factory Made Capped, at 12 o'clock, 6" within 8 inch: YES	00:03:42		
	52.40	Roots Fine Joint, from 08 to 04 o'clock, within 8 inch: YES	00:04:00		
	72.46	Roots Fine Joint, from 08 to 09 o'clock, within 8 inch: YES	00:04:44		
	123.86	Tap Factory Made Capped, at 12 o'clock, 6" within 8 inch: YES	00:06:32		
	197.81	Tap Factory Made Capped, at 12 o'clock, 6" within 8 inch: YES	00:08:33		
	201.10	Fracture Multiple, from 11 to 01 o'clock, within 8 inch: YES	00:09:03	167a, b	S 4
	201.10	Roots Fine Joint, from 08 to 04 o'clock, within 8 inch: YES	00:09:47		
	241.72	Fracture Multiple, from 05 to 07 o'clock, within 8 inch: YES	00:11:18	169ai, b	S 4
	270.87	Roots Fine Joint, from 08 to 04 o'clock, within 8 inch: YES	00:12:45		
	276.65	Crack Spiral, from 12 to 02 o'clock, within 8 inch: YES	00:13:16	171ai	S 2
	277.75	Tap Factory Made Capped, at 02 o'clock, 6", within 8 inch: YES, Remark: Roots	00:13:49		
	295.22	Roots Fine Joint, from 08 to 04 o'clock, within 8 inch: YES	00:14:27		
	325.46	Roots Fine Joint, at 09 o'clock, within 8 inch: YES	00:15:19		
	345.62	Roots Fine Joint, at 08 o'clock, within 8 inch: YES	00:15:58		
	348.31	Manhole, Remark: End of Segment Pipe found VCP	00:16:43		

QSR	QMR	SPR	MPR	OPR	SPRI	MPRI	OPRI
4221	2200	10	4	14	3.33	2	2.8

## ENCLOSURE 5:

### CCTV Sewer Inspection Project Schedule



---

**Bradbury****CCTV PROJECT SCHEDULE**

---

<b>FISCAL YEAR</b>	<b>YARD</b>	<b>SUP DIST</b>	<b>PROJECT NAME</b>	<b>LENGTH (FT)*</b>
2005-2006	E	5	Y0TV0506D	4,843
2011-2012	E	5	5_27	5,855
			<b>TOTAL (FT)</b>	<b>10,698</b>
			<b>TOTAL (MILES)</b>	<b>2</b>

\* Approximate length as of July 2005, actual project length may vary.